

EN-ROUTE CHART - ICAO

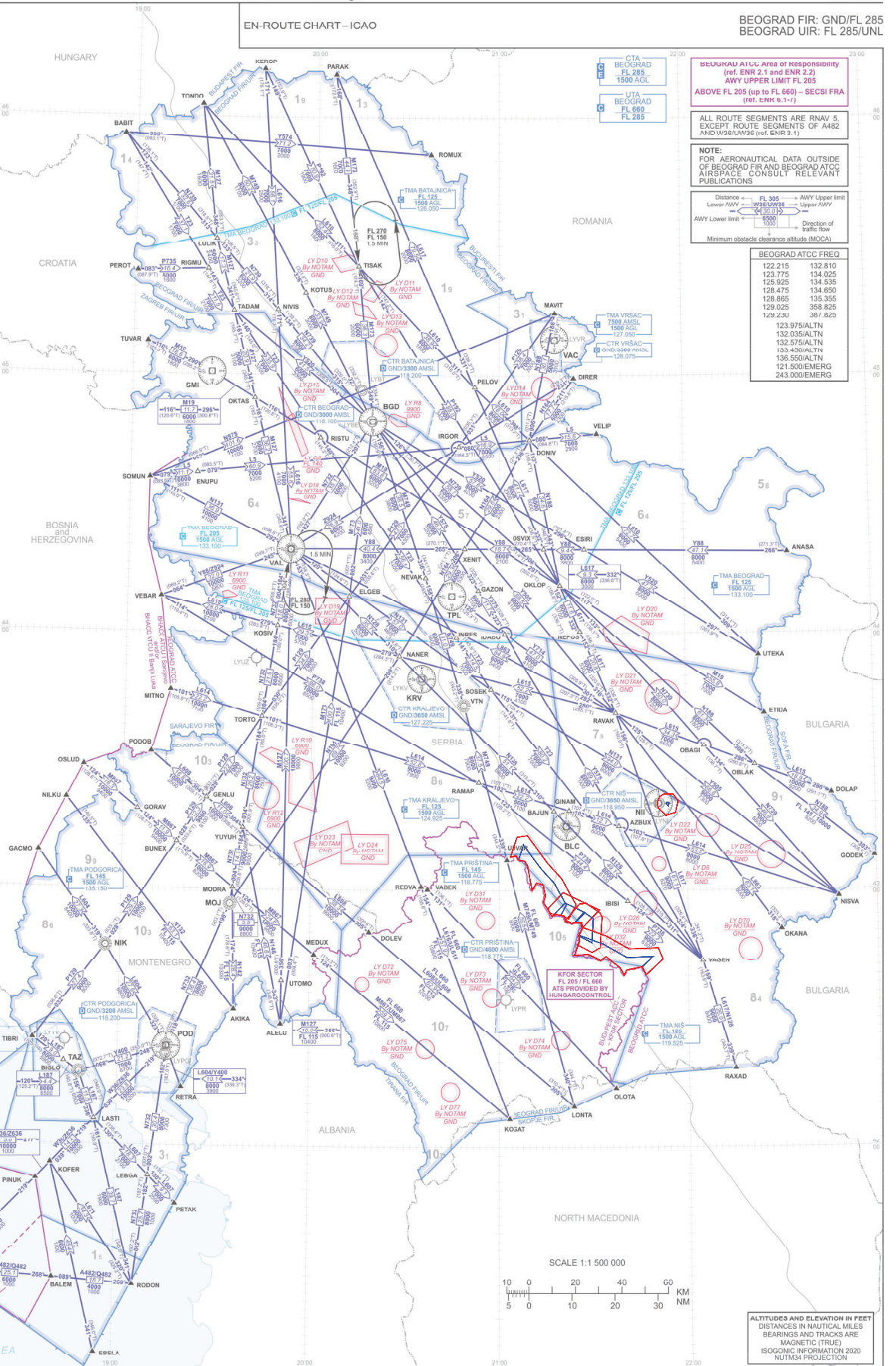
BEograd FIR: GND/FL 285  
BEograd UIR: FL 285/UHL

**RADIO-NAVIGATION AIDS**

<b>DDU 112.30</b> 44910N 020150E CH 877 300M	<b>KRV 116.30</b> 43491N 020304E CH 119X 700M	<b>SMI 117.00</b> 43052N 020501E CH 117X 300M
<b>NI 113.90</b> 43012N 021910E CH 884 700M	<b>VAC 115.00</b> 43012N 021910E CH 884 700M	<b>TPL 116.80</b> 43012N 021910E CH 884 700M
<b>BACE</b> 43110N 02110E CH 884 700M	<b>POD 115.00</b> 43012N 021910E CH 884 700M	<b>POD 115.00</b> 43012N 021910E CH 884 700M
<b>VAL 116.00</b> 43110N 02110E CH 884 700M	<b>MOJ 130.00</b> 43110N 02110E CH 884 700M	<b>NIK 302</b> 43110N 02110E CH 884 700M
<b>KRALJEVO</b> 43110N 02110E CH 884 700M	<b>TVAT</b> 43110N 02110E CH 884 700M	<b>NIK 302</b> 43110N 02110E CH 884 700M

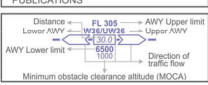
**SIGNIFICANT POINTS**

Name/Code	Coordinates	Altitude/Distance	Remarks
AKIKA	42303N 019014E	POD 113.00	055.171/17.9
ALELU	42204N 0190510E	NIL	
ANASA	44184N 022319E	TPL 116.80	077.077/8.8
AZBUX	43145N 0213620E	NI 113.90	234.971/0.5
BABIT	45554N 018554E	SMI 117.00	334.279/3.3
BAJUN	43182N 0211744E	NI 113.90	261.072/4.4
BALEM	41285N 018149E	POD 113.00	256.372/4.1
BIGLO	42192N 018431E	POD 113.00	256.372/4.1
BUNEX	43104N 019179E	NIL	
CRAYE	41501N 018074E	NIL	
DIRER	44918N 021243E	VAC 115.00	148.971/0.0
DOLAP	43227N 022460E	NIL	
DOLEV	42502N 020110E	NIL	
DONIV	44456N 021010E	VAC 115.00	189.172/4.1
EBELA	41138N 018543E	NIL	
ELGEB	44308N 020113E	BGD 112.05	182.271/4.0
ENUPU	44370N 019214E	SMI 117.00	182.123/3.3
ESRI	41409N 021294E	TPL 116.80	062.473/2.6
ETDA	43410N 022230E	TPL 116.80	245.177/4.5
GACMO	43083N 018332E	NIL	
GAZON	44048N 020512E	BGD 112.05	142.774/6.5
GENLU	43122N 018236E	SMI 117.00	182.271/4.0
GINAM	43183N 021223E	BLU 116.10	005.271/3.6
GORAV	43182N 019044E	NIL	
GORAV	43182N 019044E	NIL	
IBISI	42579N 021410E	BLC 116.10	135.972/5.5
INRES	43848N 020460E	TPL 116.80	168.871/9.3
INRES	44432N 020460E	TPL 116.80	168.871/9.3
KEROP	46104N 019414E	SMI 117.00	003.177/4.4
KOFER	41533N 018394E	POD 113.00	219.073/8.1
KOSV	44013N 019483E	VAL 116.60	194.171/8.0
KOTUS	45190N 019561E	SMI 117.00	044.172/8.4
LASTI	42026N 018358E	POD 113.00	219.073/8.1
LEBGA	41529N 019101E	NIL	
LONIA	42034N 021230E	NIL	
LULUK	45138N 019203E	SMI 117.00	356.073/1.0
MAVIT	45142N 021830E	VAC 115.00	355.671/6.1
MEDUX	42445N 020011E	NIL	
MITNO	43625N 019139E	RGD 112.05	211.777/7.9
MODRA	43002N 019351E	NIL	
NANER	43543N 020273E	KRV 116.30	310.177/4.4
NEPOS	44022N 021281E	TPL 116.80	180.173/1.1
NEVAK	44124N 020361E	TPL 116.80	298.971/7.4
NILKU	42525N 018452E	NIL	
NISVA	42682N 022475E	NIL	
NIVIS	45159N 019471E	SMI 117.00	040.172/1.0
OBAGI	43338N 020284E	SMI 113.90	030.671/2.2
OBLAK	43291N 022150E	NI 113.90	063.072/4.5
OKANA	42047N 022230E	NIL	
OKLOP	44108N 021954E	TPL 116.80	079.472/2.5
OKTAS	44543N 018400E	BGD 112.05	276.472/8.0
OLTRA	42134N 021370E	NIL	
OSLUD	43283N 018471E	NIL	
OSLUD	43283N 018471E	NIL	
PARAK	46095N 020053E	BGD 112.05	348.671/2.2
PELOV	44575N 020514E	VAC 115.00	235.071/2.9
PEROT	45242N 019004E	SMI 117.00	318.172/4.4
PETAK	41463N 019185E	POD 113.00	170.873/6.7
PINUK	41516N 018324E	POD 113.00	218.873/4.3
PODOB	43515N 019884E	NIL	
RAMAP	43256N 020532E	KRV 116.30	146.072/7.6
RAVAK	43418N 021973E	SMI 113.90	330.272/3.2
RAXAD	42189N 021191E	NIL	
REDAVA	43049N 020350E	NIL	
RETRA	42134N 019020E	POD 113.00	154.371/0.1
RETRA	45243N 019240E	SMI 117.00	352.072/4.1
RISTU	44452N 020014E	BGD 112.05	247.672/7.7
ROMUX	41279N 014909E	NIL	
ROMUX	45512N 020372E	VAC 115.00	321.475/1.9
SOMUN	44254N 019061E	SMI 117.00	204.472/8.4
SOSEK	43465N 020572E	KRV 116.30	093.571/6.3
TADAM	45145N 018324E	SMI 117.00	013.971/5.1
TIBRI	42548N 018315E	NIL	
TISAK	45219N 020138E	BGD 112.05	349.473/6.3
TONDO	46025N 019212E	SMI 117.00	352.176/2.4
TORTO	43415N 019453E	VAL 116.60	161.173/2.7
TVAR	45073N 019043E	SMI 117.00	290.271/6.6
UTOKA	43085N 021022E	NI 113.90	244.873/7.5
UTOKA	43444N 022323E	TPL 116.80	085.472/7.7
UTOMO	42384N 019510E	NIL	
VABEK	43011N 020371E	BLC 116.10	240.973/5.7
VABEK	43011N 020371E	BLC 116.10	240.973/5.7
VEBAR	44081N 019104E	VAL 116.60	244.773/2.0
VELIP	44418N 021320E	BGD 112.05	067.773/2.3
XENIT	44193N 020484E	TPL 116.80	009.971/1.4
YUVU	43142N 019301E	NIL	



**BEograd A/C/L Area of Responsibility**  
(ref. ENR 2.1 and ENR 2.2)  
AWY UPPER LIMIT FL 205  
ABOVE FL 205 (up to FL 660) - SECSI FRA  
(ref. ENR 6.1-1)

**NOTE:**  
FOR AERONAUTICAL DATA OUTSIDE  
OF BEograd FIR and BEograd ATCC  
AIRSPACE CONSULT RELEVANT  
PUBLICATIONS



**BEograd ATCC FREQ**

122.215	132.810
123.775	134.025
125.925	134.535
128.475	134.650
128.865	135.355
129.025	358.825
129.230	387.820
123.975/ALTN	
132.035/ALTN	
132.575/ALTN	
133.450/ALTN	
136.550/ALTN	
121.500/EMERG	
243.000/EMERG	

Change: RNAV routes LW36 and LZ636 - Withdrawal.

ALTITUDES AND ELEVATION IN FEET  
DISTANCES IN NAUTICAL MILES  
BEARINGS AND TRACKS ARE  
MAGNETIC (TRUE)  
ISOGONIC INFORMATION 2020  
NUTM34 PROJECTION