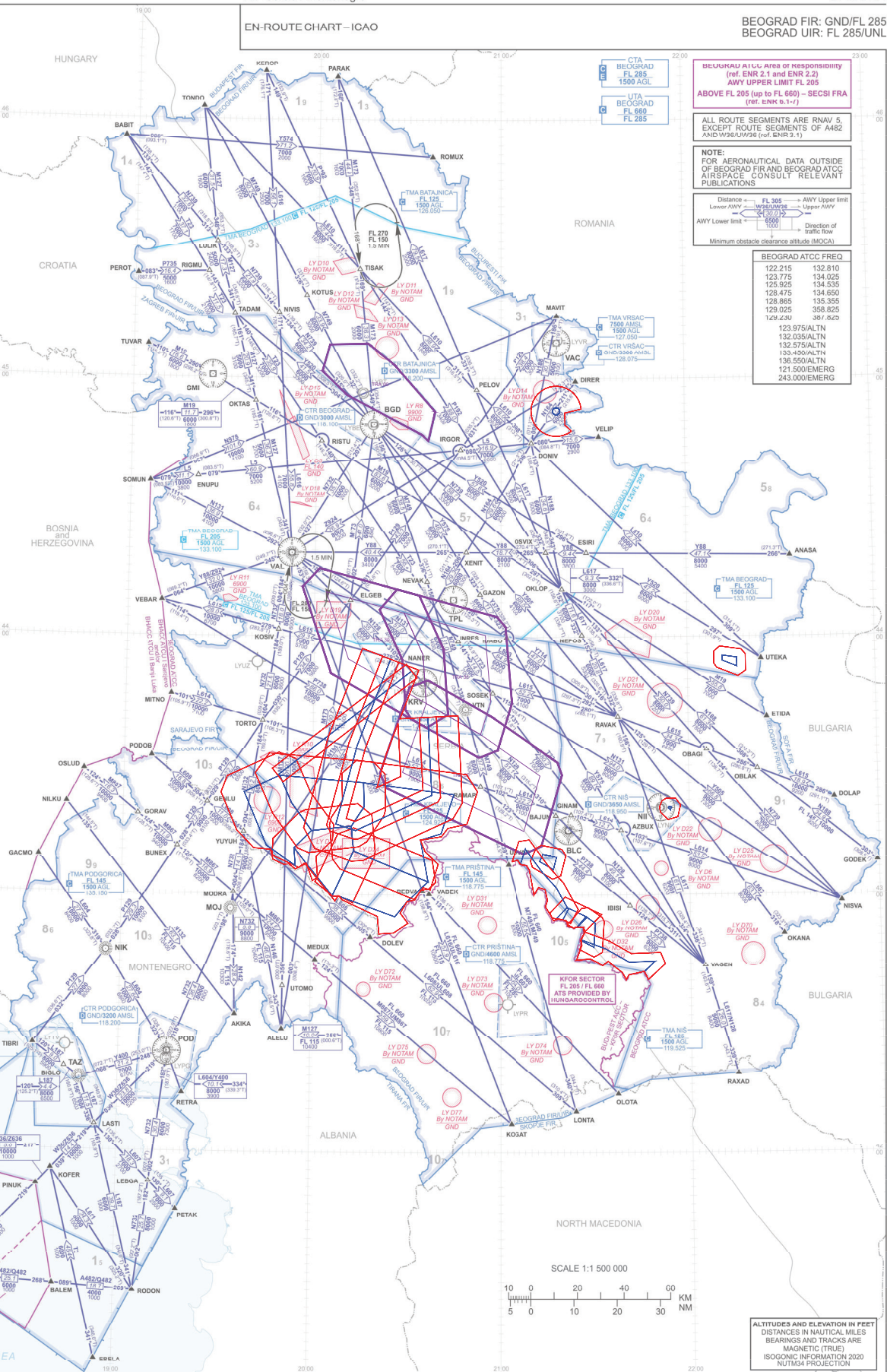


EN-ROUTE CHART - ICAO

BEograd FIR: GND/FL 285
BEograd UIR: FL 285/UUNL

RADIO-NAVIGATION AIDS		
DUU 112.30 44910N 020150E CH 877 3000	KRV 116.30 43491N 020050E CH 119X 3000	SMI 117.00 45025N 020501E CH 117X 3000
NI 113.90 43012N 021910E CH 884 3000	VAC 115.00 45061N 021924E CH 874 3000	TPL 116.80 46071N 020440E CH 116X 3000
BLAC 116.16 43110N 021924E CH 877 3000	POD 113.00 43223N 021924E CH 874 3000	POD 113.00 43223N 021924E CH 874 3000
VAL 116.00 43110N 021924E CH 877 3000	MOJ 130.00 43541N 021943E CH 119X 3000	NIK 302 43420N 020487E
TRAJAVO 43420N 020487E	TRAJAVO 43420N 020487E	NIK 302 43420N 020487E

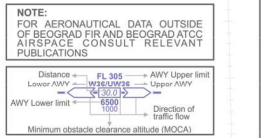
SIGNIFICANT POINTS		
Name/code designator	Coordinates	Radius / Distance voice/SM
AKIKA	42303N 019014E	POD 113.00 056.171/17.9
ALELU	42204N 019102E	NIL
ANASA	44184N 022319E	TPL 116.80 077.077/8.8
AZBUX	43145N 021362E	NI 113.90 234.971/0.5
BABIT	45554N 018554E	SMI 117.00 334.276/9.3
BAJUN	43182N 021174E	NI 113.90 261.072/4.4
BALEM	41285N 018410E	POD 113.00 256.372/4.1
BIGLO	42192N 018431E	POD 113.00 256.372/4.1
BUNEX	43110N 019179E	NIL
CRAYE	41501N 018074E	NIL
DIRER	44591N 021243E	VAC 115.00 148.971/0.0
DOLAP	43227N 022460E	NIL
DOLEY	42502N 020110E	TPL 116.80 189.172/4.1
DONIV	44456N 021010E	VAC 115.00 189.172/4.1
EBELA	41113N 018543E	NIL
ELGEB	44303N 020113E	BGD 112.05 182.271/4.0
ENUPU	44370N 019214E	SMI 117.00 182.123/2.3
ESRI	41103N 021924E	TPL 116.80 066.473/2.6
ETDA	43410N 022230E	TPL 116.80 245.177/6.4
GACMO	43083N 018332E	NIL
GAZON	44048N 020512E	BGD 112.05 142.774/6.5
GENLU	43123N 019236E	POD 113.00 219.072/3.6
GINAM	43183N 021223E	BLU 116.10 005.271/3.6
GORAV	43073N 022010E	TPL 116.80 245.177/6.4
GORAV	43182N 019044E	NIL
IBISI	42579N 021410E	BLC 116.10 135.972/5.5
INDAO	43983N 021014E	TPL 116.80 120.371/3.3
INRES	43848N 020460E	TPL 116.80 168.871/9.3
IRGOR	44432N 020490E	TPL 116.80 001.172/0.7
KEROP	46110N 019414E	SMI 117.00 003.171/4.4
KOFER	41533N 018394E	POD 113.00 219.072/3.6
KOSV	44013N 019483E	VAL 116.00 194.171/8.1
KOTUS	45190N 019561E	SMI 117.00 044.172/8.4
LASTI	42020N 018330E	POD 113.00 219.072/3.6
LEBGA	41529N 019101E	NIL
LONIA	42038N 021223E	NIL
LULUK	45138N 019203E	SMI 117.00 356.071/9.0
MAVIT	45142N 021830E	VAC 115.00 355.671/9.1
MEDUX	42445N 020011E	NIL
MITNO	43402N 019139E	RGD 112.05 211.777/6.9
MODRA	43002N 019351E	NIL
NANER	43543N 020752E	KRV 116.30 310.171/7.4
NEPOS	44022N 021281E	TPL 116.80 180.171/5.1
NEVAK	44124N 020361E	TPL 116.80 298.971/7.4
NILKU	42525N 018452E	NIL
NISVA	42882N 022475E	NIL
NIVS	45150N 019471E	SMI 117.00 040.972/1.0
OBAGI	43338N 020284E	SMI 113.90 032.671/2.2
OBLAK	43291N 022150E	NI 113.90 063.072/2.4
OKANA	42507N 022230E	NIL
OKLOP	44110N 021954E	TPL 116.80 079.472/5.5
OKTAS	44543N 018400E	BGD 112.05 276.472/8.0
OLTRA	42134N 021370E	NIL
OSLUD	43283N 018471E	NIL
OSLUD	43154N 018471E	NIL
PARAK	46095N 020053E	BGD 112.05 348.671/9.2
PELOV	44571N 020514E	VAC 115.00 235.071/9.5
PEROT	45242N 019049E	VAL 116.00 318.172/8.4
PETAK	41463N 019185E	POD 113.00 170.872/7.7
PINUK	41515N 018324E	POD 113.00 218.871/4.3
PODOB	43515N 019884E	NIL
RAMAP	43256N 020532E	KRV 116.30 146.072/7.6
RAVAK	43411N 021937E	SMI 113.90 330.272/3.8
RAXAD	42180N 021154E	NIL
REDAV	43049N 020350E	NIL
RETRA	42134N 019020E	POD 113.00 154.371/0.1
RETVA	45243N 019240E	SMI 117.00 352.072/9.1
RIGMU	44452N 020014E	BGD 112.05 247.671/7.2
RJOMK	41279N 014909E	NIL
ROMUX	45512N 020724E	VAC 115.00 321.471/9.5
SOMUN	44254N 019061E	SMI 117.00 204.472/8.4
SOSEK	43465N 020572E	KRV 116.30 093.571/6.3
TADAM	45145N 018324E	SMI 117.00 013.971/5.1
TIBRI	42543N 018315E	NIL
TISAK	45251N 020133E	BGD 112.05 349.473/9.3
TONDO	46025N 019212E	SMI 117.00 352.172/8.4
TORTO	43401N 019453E	VAL 116.00 161.172/8.7
TUVAR	45073N 019043E	SMI 117.00 290.271/6.6
UDVAR	43057N 021022E	NI 113.90 244.873/7.5
UTEKA	43444N 022233E	TPL 116.80 086.472/7.7
UTOMO	42384N 019510E	NIL
VABEK	43011N 020371E	BLC 116.10 240.973/7.7
VAC	44081N 021924E	NIL
VEBAR	44081N 019104E	VAL 116.00 244.773/2.0
VELIP	44481N 021320E	BGD 112.05 067.772/3.3
XENIT	441937N 020484E	TPL 116.80 009.971/1.4
YUVUH	43142N 019301E	NIL



BEograd A1/L Area of Responsibility
(ref. ENR 2.1 and ENR 2.2)
AWY UPPER LIMIT FL 205
ABOVE FL 205 (up to FL 660) - SECSI FRA
(ref. ENR 6.1-1)

ALL ROUTE SEGMENTS ARE RNAV 5,
EXCEPT ROUTE SEGMENTS OF A482
AND W92A/W92B (ref. ENR 2.1)

NOTE:
FOR AERONAUTICAL DATA OUTSIDE
OF BEograd FIR AND BEograd ATCC
AIRSPACE, CONSULT RELEVANT
PUBLICATIONS



BEograd ATCC FREQ	
122.215	132.810
123.775	134.025
125.925	134.535
128.475	134.650
128.865	135.355
129.025	358.825
129.230	387.820
123.975/ALTN	
132.035/ALTN	
132.575/ALTN	
130.450/ALTN	
136.550/ALTN	
121.500/EMERG	
243.000/EMERG	

Change RNAV routes UW36 and LZ636 - Withdrawal.

ALTITUDES AND ELEVATION IN FEET
DISTANCES IN NAUTICAL MILES
BEARINGS AND TRACKS ARE
MAGNETIC (TRUE)
ISOGONIC INFORMATION 2020
NUTM34 PROJECTION