

SERBIA / MONTENEGRO

Serbia and Montenegro Air Traffic Services SMATSA IIC

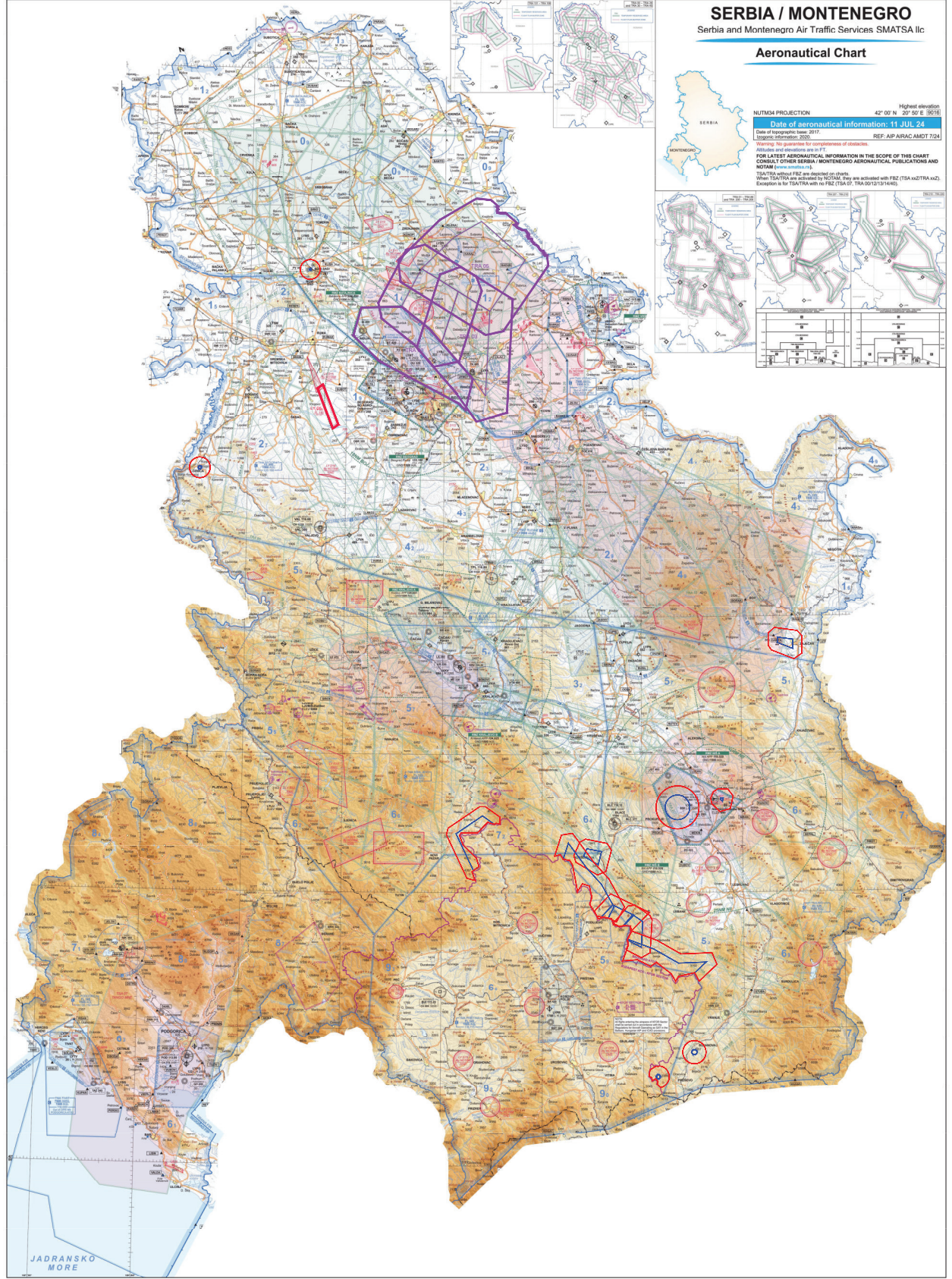
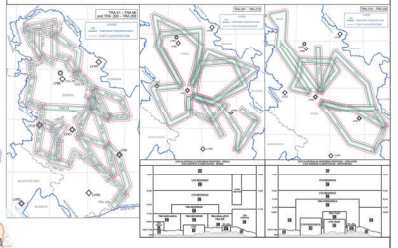
Aeronautical Chart



UTM/M projection 42° 00' N, 20° 50' E (5018)
Highest elevation 2295 m (7530 ft)
Date of aeronautical information: 11 JUL 24
Date of topographic base: 2017
Singular information: 2020 REF: AIP AIRAC AMDT 7/24

Warning: No guarantee for completeness of obstacles.
Obstacles and elevations are as of 17
FOR LATEST AERONAUTICAL INFORMATION IN THE SCOPE OF THIS CHART
CONSULT OTHER SERBIA / MONTENEGRO AERONAUTICAL PUBLICATIONS AND
NOTAM (www.smatsa.rs)

Topo/TRA without FRZ are described on charts
When TSA/TRA are activated by NOTAM, they are activated with FRZ (TSA xkz/TRA xkz).
Exception is for TSA/TRA with no FRZ (TSA-01, TRA-001/13/14/40).



JADRANSKO
MORE