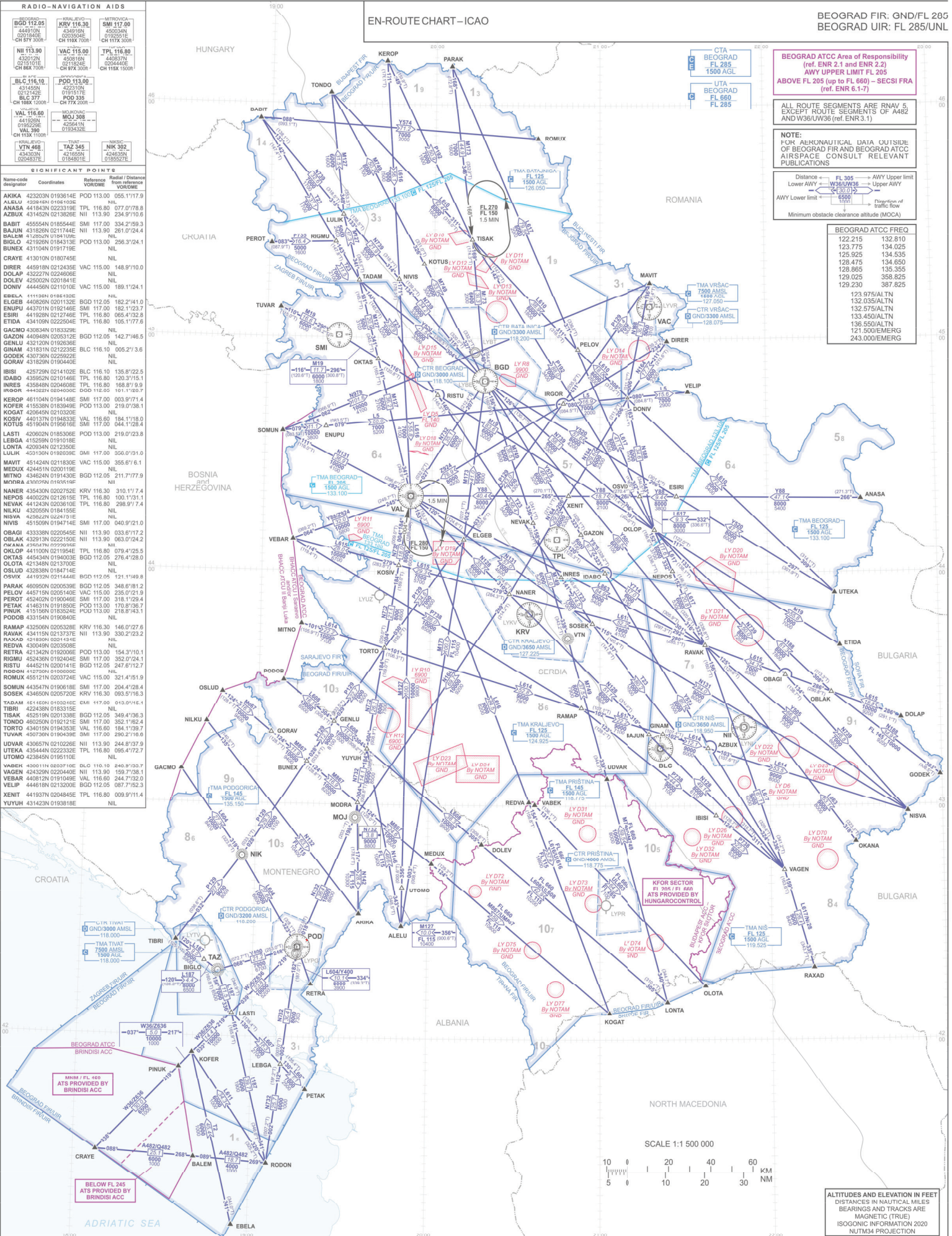


EN-ROUTE CHART - ICAO

BEOGRAD FIR: GND/FL 285
BEOGRAD UIR: FL 285/UJL



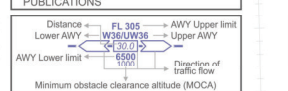
Designator	Frequency	Channel	Height
BGD 112.05	444010N CH 87Y 300R		
NII 113.80	432012N CH 88X 700R		
BLC 116.10	431455N CH 89Y 200R		
VAL 116.80	441059N CH 91Z 1100R		
KRALJEVO			
KRV 116.30	434018N CH 91Y 300R		
VAC 115.00	450816N CH 97X 300R		
MOJ 308	428435N CH 118343Z		
TAZ 345	421635N CH 1184801E		
MITROVICA			
SMI 117.90	450034N CH 117X 300R		
TPL 116.80	440337N CH 115X 1500R		

Name-code designator	Coordinates	Reference	Radial / Distance from reference	WORD/DIRM
AKIRA	423203N 019361E	POD 113.00	055.17/17.9	
ALELU	425814N 019400E	NIL		
ANASA	441843N 022331E	TPL 116.80	077.07/78.8	
AZBUX	431524N 021862E	NII 113.80	024.32/28.8	
BABIT	405554N 018554E	SMI 117.90	334.25/59.3	
BAJUN	431828N 021714E	NII 113.90	261.01/24.4	
BALEN	412824N 018410E	POD 113.00	256.31/24.1	
BIGLO	412824N 018410E	NIL		
BUNEX	431104N 019179E	NIL		
CRAYE	413010N 018074E	NIL		
DIRER	445918N 021243E	VAC 115.00	148.91/10.0	
DOLAP	425227N 022468E	NIL		
DOLEV	425202N 020184E	NIL		
DONIV	444456N 021101E	VAC 115.00	189.12/4.1	
EBELA	411158N 018432E	NIL		
ELGB	440828N 020113E	BGD 112.05	182.21/41.0	
ENUPU	443701N 019214E	SMI 117.90	182.13/27.3	
ESURI	441938N 021274E	TPL 116.80	065.41/32.8	
ETIDA	434108N 022250E	TPL 116.80	105.17/89.7	
GACMO	430834N 018332E	NIL		
GAZON	440948N 020531E	BGD 112.05	142.71/46.5	
GENLU	433138N 019185E	NIL		
GINAM	431831N 021223E	BLC 116.10	005.27/3.6	
GODER	430738N 022592E	NIL		
GORAV	431929N 019434E	NIL		
IBISI	425729N 021410E	BLC 116.10	135.87/22.5	
IDABO	435629N 021014E	TPL 116.80	120.31/15.1	
INRES	433848N 020468E	TPL 116.80	188.97/9.9	
KOSAR	444324N 020400E	DOO 119.80	105.17/89.7	
KEROP	461104N 019414E	SMI 117.90	003.97/18.1	
KOFER	415538N 018349E	POD 113.00	219.07/38.1	
KOSAT	420642N 021030E	NIL		
KOSIV	440137N 019483E	VAL 116.80	184.17/18.0	
KOTUS	431904N 019561E	SMI 117.90	044.17/28.4	
LASTI	420628N 018539E	POD 113.00	219.12/38.8	
LEBGA	415259N 019101E	NIL		
LONTA	420934N 021235E	NIL		
LYUJ	453150N 019209E	SMI 117.90	350.07/19.0	
MAVIT	451424N 021183E	VAC 115.00	355.97/6.1	
MEDUX	424451N 020011E	NIL		
MITNO	434624N 019143E	BGD 112.05	211.77/77.9	
NANER	435430N 020275E	KRV 116.30	310.17/7.1	
NEPOS	440221N 021261E	TPL 116.80	100.31/31.1	
NEVAK	441263N 020361E	NIL		
NII	430358N 018435E	NIL		
NISVA	429624N 022471E	NIL		
NISV	451059N 019471E	NIL		
OBAGI	433338N 020564E	NII 113.90	033.17/7.2	
OBLAK	432913N 022215E	NII 113.90	063.24/2.4	
OKANA	429647N 020795E	NIL		
OKLDP	441100N 021195E	TPL 116.80	078.47/25.5	
OKTAS	445434N 019400E	BGD 112.05	276.47/28.0	
OLOTA	421348N 021370E	NIL		
OSLUD	432338N 018471E	NIL		
OSVIV	441932N 021144E	BGD 112.05	121.11/49.8	
PARAK	409950N 020538E	BGD 112.05	348.67/81.2	
PELOV	445715N 020514E	VAC 115.00	235.07/21.9	
PEROT	452402N 019004E	SMI 117.90	318.17/29.4	
PETAK	414631N 019185E	POD 113.00	170.87/36.7	
PINUK	415158N 018350E	POD 113.00	118.94/31.1	
PODOB	433154N 019084E	NIL		
RAMAP	432508N 020532E	KRV 116.30	146.07/27.6	
RAVAK	434115N 021377E	NII 113.90	330.27/23.2	
RETRA	411608N 019202E	SMI 117.90	015.07/91.1	
REDVA	430049N 020350E	NIL		
RETJA	421342N 019200E	POD 113.00	54.37/24.1	
RIGMU	452436N 019240E	SMI 117.90	352.07/4.1	
RISTU	444521N 020014E	BGD 112.05	247.61/12.7	
RODAN	412750N 019000E	NIL		
ROMUX	455121N 020374E	VAC 115.00	321.47/51.9	
SOMUN	443547N 019061E	SMI 117.90	204.47/28.4	
SOSEK	434650N 020720E	KRV 116.30	093.57/16.3	
TADAM	411608N 019202E	SMI 117.90	015.07/91.1	
TIBRI	422438N 018331E	NIL		
TISAK	452519N 020133E	BGD 112.05	349.47/36.3	
TORDO	402258N 019212E	SMI 117.90	352.17/21.4	
TORTO	434015N 019435E	VAL 116.80	184.17/39.7	
TUVAR	450738N 019043E	SMI 117.90	290.27/16.6	
UDVAR	430657N 021022E	NII 113.90	244.97/37.9	
UTEKA	435444N 022232E	TPL 116.80	066.47/27.7	
UTOMO	423845N 019510E	NIL		
VABEK	430011N 020710E	BLC 116.10	240.97/33.7	
VAGEN	424328N 022044E	NII 113.90	159.77/38.4	
VEBAR	440812N 019104E	VAL 116.80	257.77/32.0	
VELIP	444618N 021320E	BGD 112.05	087.77/52.3	
XENIT	441937N 020484E	TPL 116.80	009.97/11.4	
YUYUH	431423N 019381E	NIL		

BEOGRAD ATCC Area of Responsibility
(ref. ENR 2.1 and ENR 2.2)
AWY UPPER LIMIT FL 205
ABOVE FL 205 (up to FL 660) - SECSI FRA
(ref. ENR 6.1-7)

ALL ROUTE SEGMENTS ARE RNAV 5
EXCEPT ROUTE SEGMENTS OF A482
AND W36/UW36 (ref. ENR 3.1)

NOTE:
FOR AERONAUTICAL DATA OUTSIDE
OF BEOGRAD FIR AND BEOGRAD ATCC
AIRSPACE CONSULT RELEVANT
PUBLICATIONS



123.975ALTN	132.810
123.035ALTN	134.025
123.575ALTN	134.535
128.475	134.850
128.865	135.355
129.025	358.825
129.230	387.825

123.975ALTN	132.810
123.035ALTN	134.025
123.575ALTN	134.535
128.475	134.850
128.865	135.355
129.025	358.825
129.230	387.825

Change RNAV routes UW36 and UZ636 - Withdrawal

SCALE 1:1 500 000



ALTITUDES AND ELEVATION IN FEET
DISTANCES IN NAUTICAL MILES
BEARINGS AND TRACKS ARE
MAGNETIC (TRUE)
ISOGONIC INFORMATION 2020
NUTM34 PROJECTION