

# SERBIA / MONTENEGRO

Serbia and Montenegro Air Traffic Services SMATSA IIC

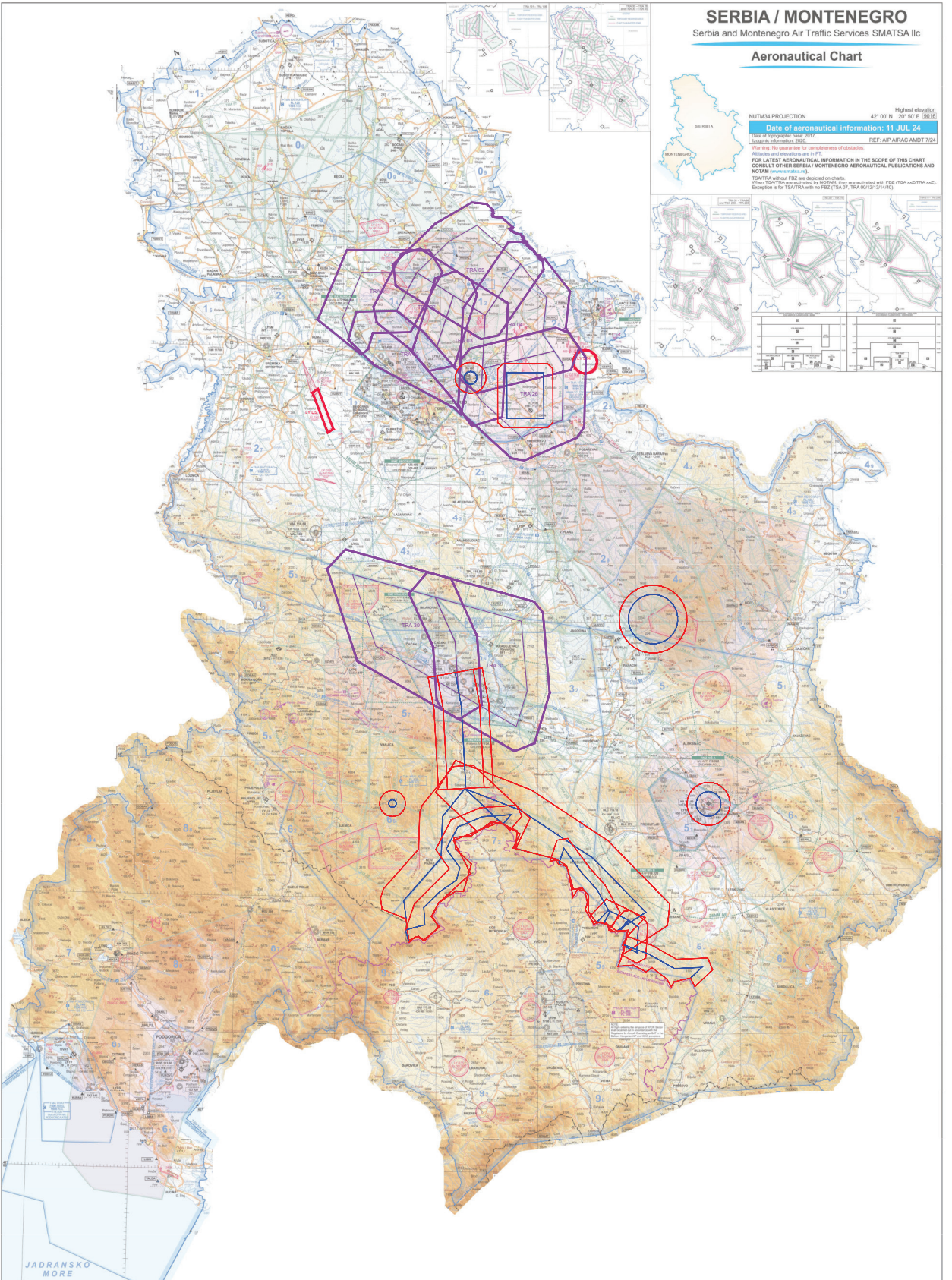
## Aeronautical Chart



NUTINA PROJECTION Highest elevation: 20° 50' E (1958)  
Date of aeronautical information: 11 JUL 24  
REF: AIP AIRAC AMDT 1/24

NOTES:  
- No guarantee for completeness of obstacles.  
- All data are provided as of 17.  
- FOR LATEST AERONAUTICAL INFORMATION IN THE SCOPE OF THIS CHART CONSULT OTHER SERBIA / MONTENEGRO AERONAUTICAL PUBLICATIONS AND NOTAM (www.smatsa.rs).

THIS CHART IS NOT A LEGAL DOCUMENT AND DOES NOT REPLACE THE ORIGINAL DOCUMENTS. IT IS PROVIDED AS A SERVICE TO THE USER. THE USER IS RESPONSIBLE FOR THE USE OF THIS CHART AND FOR THE CONSEQUENCES OF ANY ERRORS OR OMISSIONS. EXCEPTIONS FOR THIS CHART WITH THE ICAO (SIP, ICAO 9130/3-1462).



JADRANSKO MORE