

EN-ROUTE CHART - ICAO

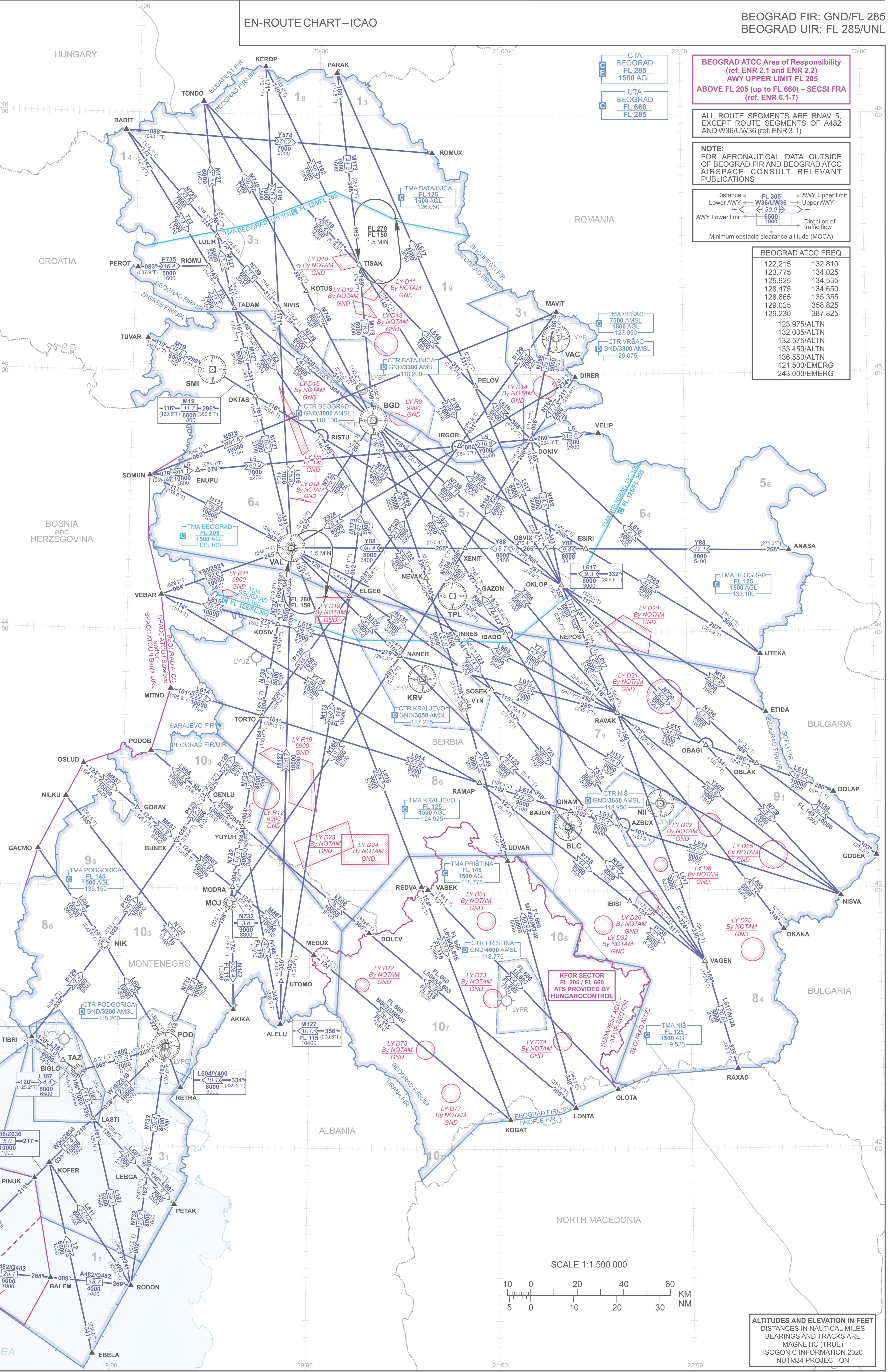
BEOGRAD FIR: GND/FL 285
BEOGRAD UIR: FL 285/UJNL

RADIO-NAVIGATION AIDS

BEOGRAD BGD 112.05 44°49'10"N 020°18'40"E CH 57X 3000R	KRALJEVO KRV 116.30 44°49'10"N 020°35'04"E CH 110X 700R	MITROVICA SMI 117.00 45°00'30"N 019°25'11"E CH 117X 3000R
NII 113.90 43°01'21"N 021°15'10"E CH 86X 700R	VAC 115.00 45°01'16"N 021°18'24"E CH 97X 3000R	TPL 116.80 44°08'37"N 020°44'02"E CH 115X 1500R
BLC 116.10 43°14'55"N 021°14'22"E BLC 377 CH 108X 1200R	POD 113.00 42°23'10"N 019°15'17"E POD 335 CH 77X 200R	
VAL 116.60 44°19'28"N 019°52'29"E VAL 390 CH 113X 1100R	MOJKOVAC MQJ 308 42°56'41"N 019°34'32"E	
VTN 468 43°43'03"N 020°48'37"E	TAZ 345 42°16'55"N 018°40'11"E	NIK 302 42°46'33"N 018°55'27"E

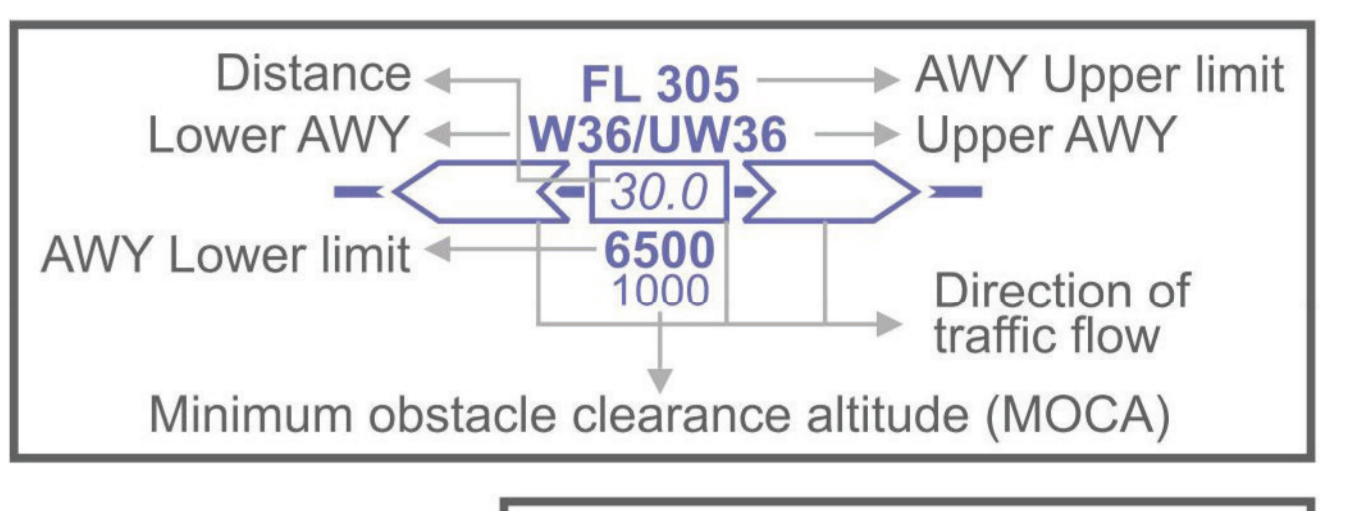
SIGNIFICANT POINTS

Name-code designator	Coordinates	Reference VOR/DME	Radial / Distance from reference VOR/DME
AKIKA	423203N 0193614E	POD 113.00	055.1°/17.9
ALELU	422845N 0195102E	NIL	
ANASA	441843N 022319E	TPL 116.80	077.0°/78.8
AZBUX	431452N 0213826E	NII 113.90	234.9°/10.6
BABIT	455554N 0185544E	SMI 117.00	334.2°/59.3
BAJUN	431826N 0211744E	NII 113.90	261.0°/24.4
BALEM	412852N 0184109E	NIL	
BIGLO	421926N 0184133E	POD 113.00	256.3°/24.1
BUNEX	431104N 0191719E	NIL	
CRAYE	413010N 0180745E	NIL	
DIRER	445918N 0212435E	VAC 115.00	148.9°/10.0
DOLAP	432227N 0224606E	NIL	
DOLEV	425002N 0201841E	NIL	
DONIV	444456N 0211010E	VAC 115.00	189.1°/24.1
EBELA	411136N 0185432E	NIL	
ELGEB	440826N 0201132E	BGD 112.05	182.2°/41.0
ENUPU	443701N 0192146E	SMI 117.00	182.1°/23.7
ESIRI	441928N 0212746E	TPL 116.80	085.4°/32.8
ETIDA	434109N 0222504E	TPL 116.80	105.1°/77.6
GACMO	430834N 0183329E	NIL	
GAZON	440948N 0205312E	BGD 112.05	142.7°/46.5
GENLU	432120N 0192636E	NIL	
GINAM	431831N 0212235E	BLC 116.10	005.2°/3.6
GODEK	430736N 0225922E	NIL	
GORAV	431829N 0190440E	NIL	
IBISI	425729N 0214102E	BLC 116.10	135.8°/22.5
IDABO	435952N 0210146E	TPL 116.80	120.3°/15.1
INRES	435848N 0204608E	TPL 116.80	168.8°/9.9
IRGOR	444322N 0204636E	BGD 112.05	101.1°/20.7
KEROP	461104N 0194148E	SMI 117.00	003.9°/71.4
KOFER	415538N 0183949E	POD 113.00	219.0°/38.1
KOGAT	420645N 0210320E	NIL	
KOSIV	440137N 0194833E	VAL 116.60	184.1°/18.0
KOTUS	451904N 0195616E	SMI 117.00	044.1°/28.4
LASTI	420602N 0185306E	POD 113.00	219.0°/23.8
LEBGA	415259N 0191018E	NIL	
LONTA	420934N 0212350E	NIL	
LULIK	453136N 0192639E	SMI 117.00	356.0°/31.0
MAVIT	451424N 0211830E	VAC 115.00	355.6°/6.1
MEDUX	424451N 0200119E	NIL	
MITNO	434624N 0191430E	BGD 112.05	211.7°/77.9
MODRA	430025N 0193519E	NIL	
NANER	435430N 0202752E	KRV 116.30	310.1°/7.4
NEPOS	440022N 0212615E	TPL 116.80	100.1°/31.1
NEVAK	441243N 0203610E	TPL 116.80	298.9°/7.4
NILKU	452055N 0194155E	NIL	
NISVA	425822N 022751E	NIL	
NIVIS	451509N 0194714E	SMI 117.00	040.9°/21.0
OBAGI	433338N 0202545E	NII 113.90	063.6°/17.2
OBLAK	432913N 0222150E	NII 113.90	063.0°/24.2
OKANA	425047N 0222935E	NIL	
OKLOP	441100N 0211954E	TPL 116.80	079.4°/25.5
OKTAS	445434N 0194003E	BGD 112.05	276.4°/28.0
OLOTA	421348N 0213700E	NIL	
OSLUD	432838N 0184714E	NIL	
OSVIX	441932N 0211444E	BGD 112.05	121.1°/49.8
PARAK	460950N 0200539E	BGD 112.05	348.6°/81.2
PELOV	445715N 0205140E	VAC 115.00	236.0°/21.9
PEROT	452402N 0190046E	SMI 117.00	318.7°/29.4
PETAK	414631N 0191850E	POD 113.00	170.8°/36.7
PINUK	415166N 0183524E	POD 113.00	218.8°/43.1
PODOB	433154N 0190840E	NIL	
RAMAP	432506N 0205328E	KRV 116.30	146.0°/27.6
RAVAK	434115N 0213737E	NII 113.90	330.2°/23.2
RAXAD	421830N 0221434E	NIL	
REDVA	430049N 0203508E	POD 113.00	154.3°/10.1
RETRA	421342N 0192006E	SMI 117.00	352.0°/24.1
RIGMU	452436N 0192404E	SMI 117.00	352.0°/24.1
RISTU	444521N 0200141E	BGD 112.05	247.6°/12.7
RODON	412730N 0190600E	NIL	
ROMUX	455121N 0203724E	VAC 115.00	321.4°/51.9
SOMUN	443547N 0190618E	SMI 117.00	093.5°/16.3
SOSEK	434650N 0205720E	KRV 116.30	093.5°/16.3
TADAM	451450N 0193246E	SMI 117.00	013.9°/15.1
TIBRI	422438N 0183315E	NIL	
TISAK	452519N 0201338E	BGD 112.05	349.4°/36.3
TONDO	460250N 0192121E	SMI 117.00	352.1°/62.4
TORTO	434015N 0194353E	VAL 116.60	184.1°/39.7
TUVAR	450736N 0190439E	SMI 117.00	290.2°/16.6
UDVAR	430657N 0210228E	NII 113.90	244.8°/37.9
UTEKA	435444N 0222332E	TPL 116.80	095.4°/17.2
UTOMO	423845N 0195110E	NIL	
VABEK	430011N 0203718E	BLC 116.10	240.9°/35.7
VAGEN	424329N 0220440E	NII 113.90	159.7°/38.1
VEBAR	440812N 0191049E	VAL 116.60	244.7°/39.0
VELIP	444618N 0213200E	BGD 112.05	087.7°/52.3
XENIT	441937N 0204845E	TPL 116.80	009.9°/11.4
YUYUH	431423N 0193818E	NIL	



BEOGRAD ATCC Area of Responsibility
(ref. ENR 2.1 and ENR 2.2)
AWY UPPER LIMIT FL 205
ABOVE FL 205 (up to FL 660) - SECSI FRA
(ref. ENR 6.1-7)

NOTE:
FOR AERONAUTICAL DATA OUTSIDE
OF BEOGRAD FIR AND BEOGRAD ATCC
AIRSPACE CONSULT RELEVANT
PUBLICATIONS

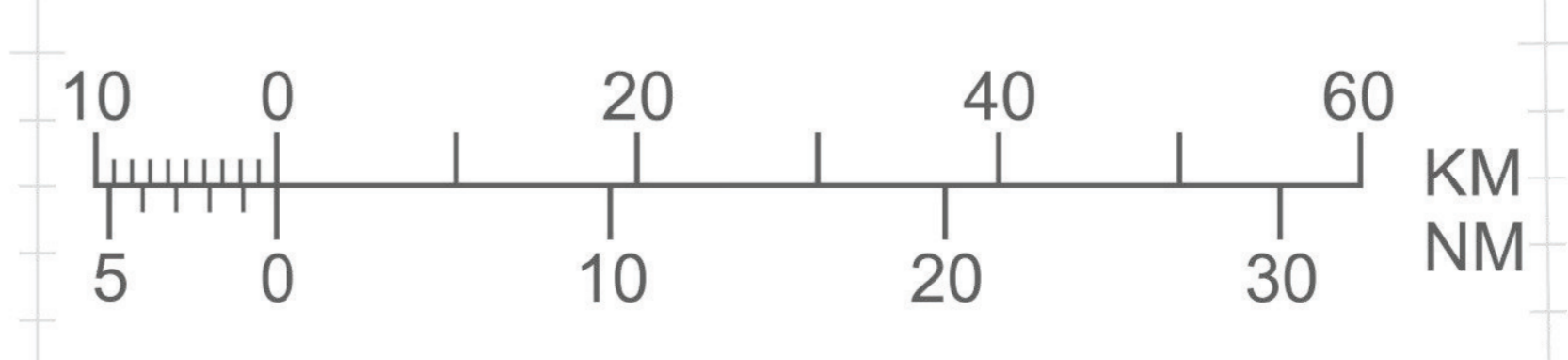


BEOGRAD ATCC FREQ

122.215	132.810
123.775	134.025
125.925	134.535
128.475	134.650
128.865	135.355
129.025	358.825
129.230	387.825
123.975/ALTN	
132.035/ALTN	
132.575/ALTN	
133.450/ALTN	
136.550/ALTN	
121.500/EMERG	
243.000/EMERG	

Change: RNAV routes UW36 and UZ636 - Withdrawal.

SCALE 1:1 500 000



ALTITUDES AND ELEVATION IN FEET
DISTANCES IN NAUTICAL MILES
BEARINGS AND TRACKS ARE
MAGNETIC (TRUE)
ISOGONIC INFORMATION 2020
NUTM34 PROJECTION